

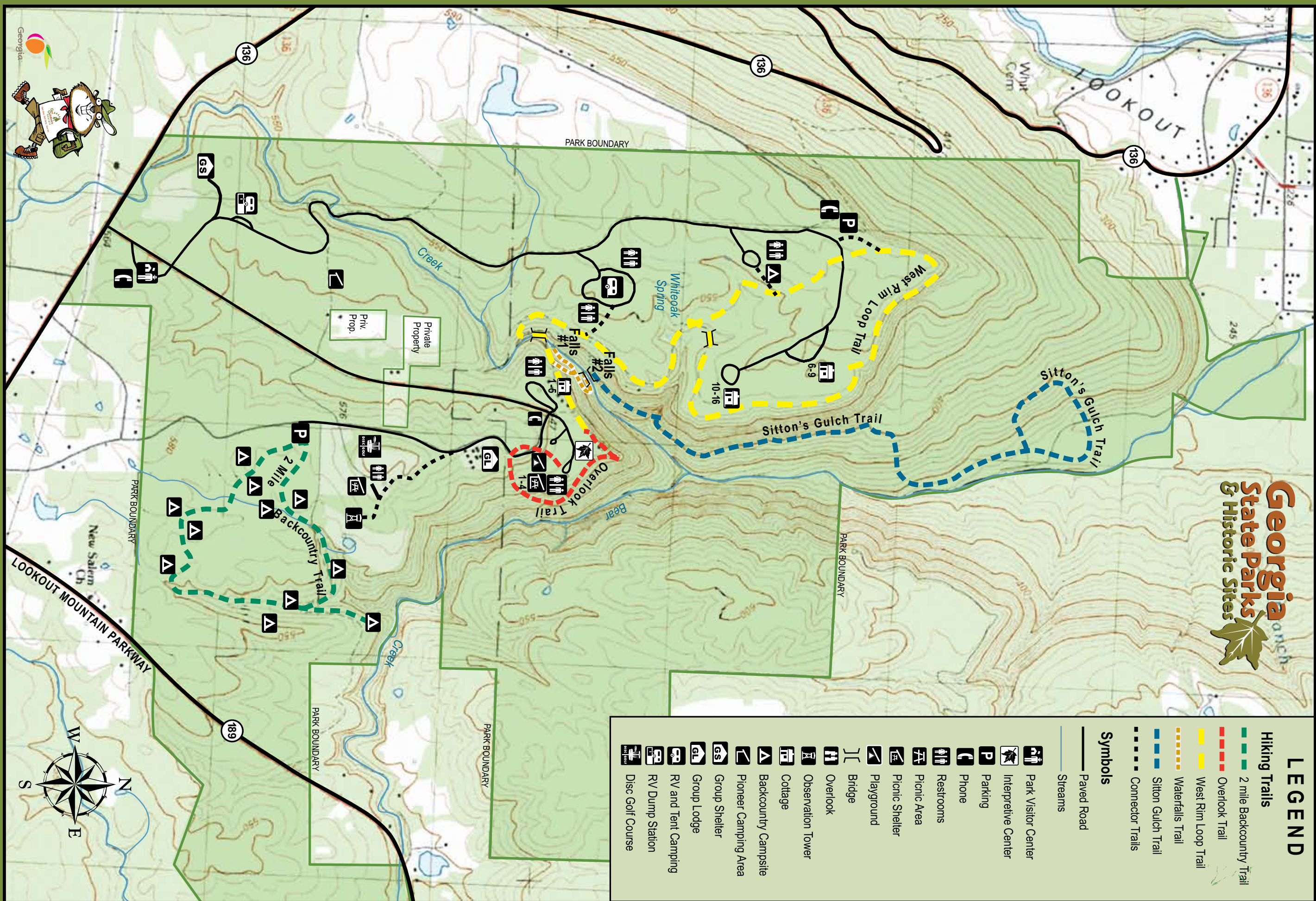
Cloudland Canyon State Park Trail Map

122 Cloudland Canyon Park Road • Rising Fawn, GA 30738 • 706-657-4050 • Reservations: 1-800-864-7275 • www.GeorgiaStateParks.org



LEGEND

	Hiking Trails
	2 mile Backcountry Trail
	Overlook Trail
	West Rim Loop Trail
	Waterfalls Trail
	Sitton Gulch Trail
	Connector Trails
	Paved Road
	Streams
	Park Visitor Center
	Interpretive Center
	Parking
	Phone
	Restrooms
	Picnic Area
	Picnic Shelter
	Playground
	Bridge
	Overlook
	Observation Tower
	Cottage
	Backcountry Campsite
	Pioneer Camping Area
	Group Shelter
	Group Lodge
	RV and Tent Camping
	RV Dump Station
	Disc Golf Course



CLOUDLAND CANYON STATE PARK

Cloudland Canyon State Park, established in 1938, is located on the western edge of Lookout Mountain. This is one of the most scenic parks in the state, offering rugged geology and beautiful vistas. The park straddles a deep gorge cut into the mountain by combined waters of Bear and Daniels Creeks, and elevation differs from 800 to 1,900 feet. The creeks flow north out of the park, not conforming to the typical drainage pattern of the area. The most spectacular view into the canyon is found near the picnic area parking lot; however, additional views can be found along the rim trail.

Hardy visitors who hike to the bottom of the gorge find two waterfalls cascading over layers of sandstone and shale into the pools below. The hiking trail begins the descent to Daniel Creek, which forms the waterfalls and drops into Sitton Gulch. Two Waterfalls can be found along this trail, one nearly 100 feet high. The quantity of water over the falls varies greatly from season to season. The water falls into large splash pools and then continues to cascade down over the boulder-strewn streambed. Each of the waterfalls has its own distinctive beauty, making the hike down and back well worth the trip.

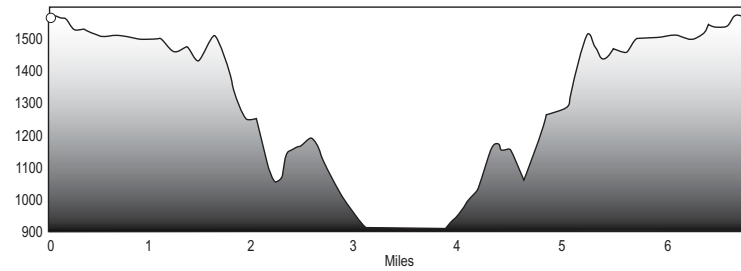
The west rim trail leads to a picturesque footbridge over Daniel Creek and then continues on the west rim side of the canyon. This side also has gorgeous overlook areas into the canyon and western escarpment of Lookout Mountain, where you can look down on the town of Trenton and Lookout Valley, a drop of more than 1,200 feet. The trail goes north along this rim to stone steps and a spectacular rocky point overlook. There are a wide variety of trees, shrubs, and bushes in the park, as well as mosses, ferns, mushrooms, and wildflowers. The park is gorgeous at any time of the year, but it is even more beautiful in the spring and fall. Outdoor lovers should not miss this park's spectacular scenery.

Cloudland Canyon has been selected as one of the wildlife viewing areas in Georgia. There is an observation tower where on occasion you can watch deer, turkey, rabbits and more grazing around a small pond.

In addition to the hiking, picnicking, and playground facilities, there are also campsites, cottages, group lodging, group shelters, picnic shelters, and a tennis court. Cloudland Canyon State Park is operated by Georgia's Department of Natural Resources under the parks and historic sites division. This division is dedicated to conserving Georgia's beauty and history for present and future generations.

PARK TRAIL DESCRIPTIONS AND OTHER INFORMATION

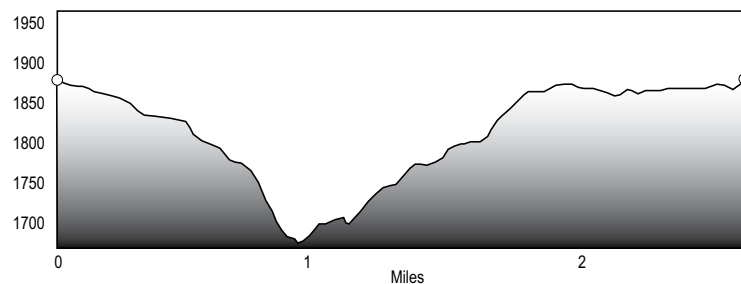
Sitton's Gulch Loop Trail



Sitton's Gulch Loop Trail - approximately 6.5 miles roundtrip
Stairsteps and Compacted Natural Soil Surface
Strenuous in difficulty.

Sitton's Gulch Loop Trail begins in the main overlook area as a part of the second waterfall trail, winding down stairsteps and officially begins at the new Daniel's Creek bridge. The trail follows Daniel Creek through open, green hemlock groves and overlooks numerous small waterfalls cascading through limestone crevices. There are excellent spring wildflowers displayed in the loop section of the trail and the autumn color is magnificent. Sitton's Gulch Trail is 6.5 miles long and is considered strenuous due to several steep grades including 1,200 stairsteps.

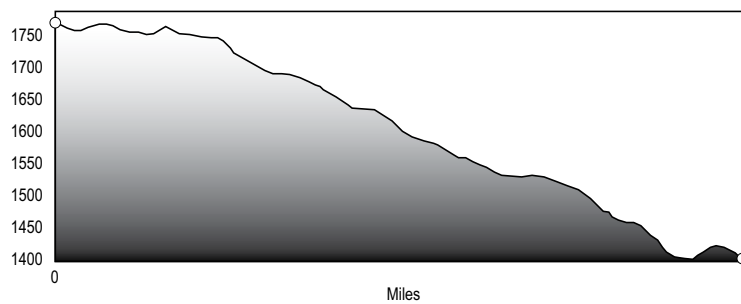
Two-Mile Backcountry Loop



Two-Mile Backcountry Loop - approximately 2.5 miles roundtrip
Compacted Natural Soil Surface
Moderate in difficulty.

The Backcountry loop features Cloudland Canyon's most inexpensive and secluded camping sites, situated within pristine hemlock groves. The trail passes through open woods, progressing down a moderate grade into a hollow, filled with spring and summer flowers. On the far end of the loop, a moderate climb brings hikers out of the hemlocks, back to level trail among oaks and hickories, and eventually back to the parking area.

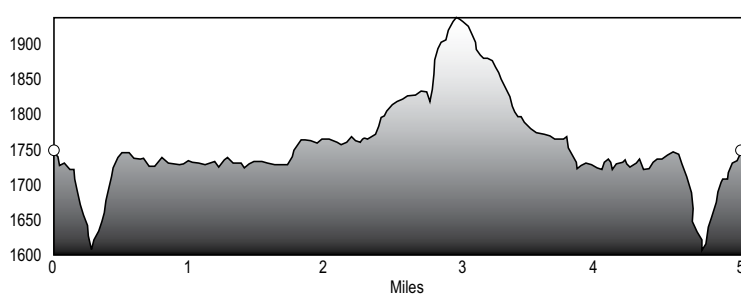
Waterfalls Trail



Waterfalls Trail - approximately 2 miles roundtrip
Compacted Natural Soil Surface
Strenuous in difficulty.

The Waterfalls Trail begins on a paved section, at the main overlook, and progresses into the canyon on a 40-degree slope. Most of the trail consists of gravel and stair-steps, numbering over 1,200 in all. Both waterfalls cascade off of sheer faces at 60 and 90 feet, and are among the most beautiful in the state. A strenuous and time-consuming, two-mile hike, swimming and climbing on rocks are strictly forbidden, and regulations are enforced.

West Rim Loop Trail



West Rim Loop Trail - 5 miles
Compacted Natural Soil Surface
Moderate to Strenuous in difficulty.

The West Rim Loop Trail is one of the most scenic hiking trails in the nation. Beginning at the Daniels Creek Bridge, and climbing out of the canyon onto the plateau, the trail provides magnificent views of Trenton, Georgia, neighboring Sand Mountain, and of Cloudland Canyon itself. Cottages, West Rim, and Walk-In Camping areas are accessible via the West Rim Loop. Passing over varied terrain, most of the hike is moderately difficult, becoming strenuous on several short sections.

SAFETY TIPS & ETIQUETTE

- Tell someone your itinerary and expected return time.
- Be prepared for unexpected weather changes by dressing in layers and carrying rain gear. Avoid wearing cotton. Today's hikers can choose from numerous fabrics that wick moisture, dry quickly or conserve heat. Many experienced hikers wear a lightweight shirt that wicks moisture, while carrying a fleece pullover and rain jacket.
- Take a map, water, snacks, first aid kit, flashlight and whistle. Three short blasts on a whistle are known as a call for help.
- Do not stray from trails. If you become lost, stay in one location and wait for help. This will make it easier for rescuers to find you.
- Don't count on cell phones to work in the wilderness, but if they do, be able to give details about your location.
- Invest in good hiking socks such as those found at sporting goods stores. Avoid blisters by carrying "moleskin" and applying it as soon as you feel a hot spot on your feet. Available in the foot care section of drug stores, moleskin is like felt that sticks to your skin.
- Be prepared for unexpected rain and wind which can lead to hypothermia. Always carry quality rain gear and turn back in bad weather. If you become wet or cold, it is important to get dry and warm as quickly as possible.
- Pack out all trash.
- Keep pets on a leash.
- Do not pick flowers or disturb wildlife.
- Protect the landscape by staying on trails.

CLIMATE DATA FOR RISING FAWN, GEORGIA

Month	Avg. High	Avg. Low	Mean	Avg. Precip.	Record High	Record Low
Jan	48°F	26°F	37°F	6.06 in	77°F (1950)	-14°F (1985)
Feb	53°F	28°F	41°F	5.62 in	80°F (1962)	-12°F (1958)
Mar	61°F	35°F	48°F	6.57 in	84°F (1982)	2°F (1980)
Apr	70°F	42°F	56°F	4.73 in	89°F (1986)	19°F (1992)
May	77°F	52°F	64°F	4.70 in	94°F (1962)	29°F (1971)
Jun	84°F	60°F	72°F	4.33 in	101°F (1952)	35°F (1966)
Jul	88°F	65°F	76°F	5.18 in	105°F (1952)	45°F (1967)
Aug	87°F	64°F	75°F	3.49 in	105°F (1954)	46°F (2004)
Sep	82°F	57°F	69°F	4.27 in	100°F (1954)	29°F (1967)
Oct	72°F	44°F	58°F	3.29 in	93°F (1954)	19°F (1961)
Nov	61°F	36°F	49°F	5.00 in	84°F (1961)	-2°F (1950)
Dec	51°F	29°F	40°F	5.12 in	78°F (1951)	-8°F (1962)